

EcoPAC

increased **property value**

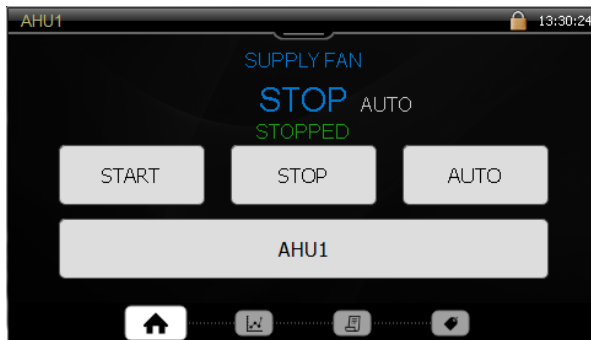
Function examples



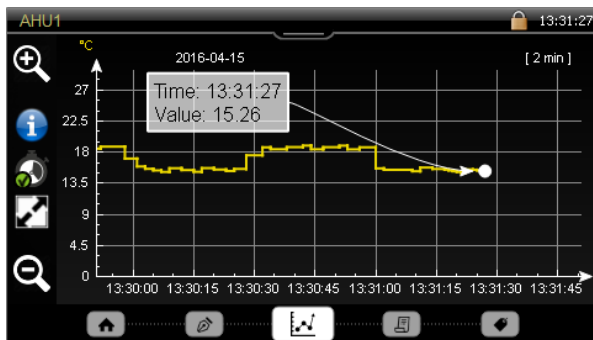
EVENTLIST WITH FILTERS
All events are stored for several years



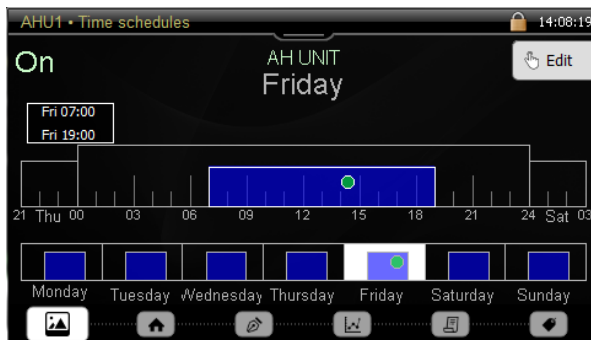
BAR CHARTS
Display and compare up to 4 years simultaneously
Selectable for all energy meters/values



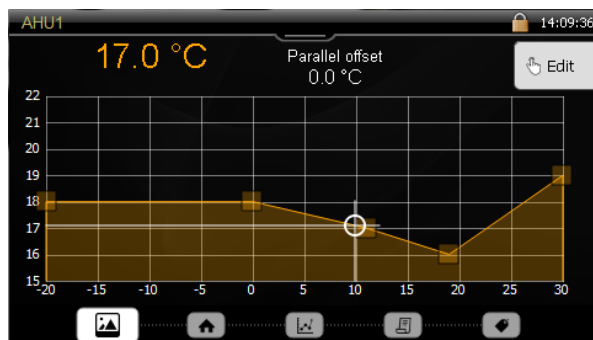
MANEUVER DIALOG WITH INDICATION
Dialogs for all types of objects with clear and intuitive functions



DYNAMIC TREND CURVES
All signals are logged with 2 second resolution according to CoV
Zoomable axes
Trends are stored for several years



TIME SCHEDULES
Up to 100 time schedules



GRAPHICAL CONTROL CURVES
Standard 6 break points and parallel offset

GRAPHICAL TOUCH DISPLAY
Tap and swipe for easy navigation

PID CONTROLLERS
Up to 100 PID controllers

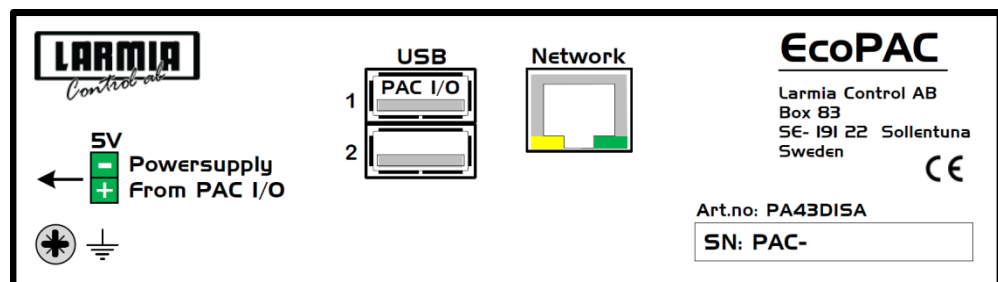
FUNCTION BLOCKS
500 freely programmable function blocks

SORTED ALARM LIST
The highest priority alarm at the top of the list

EMBEDDED ALARM SERVER
Send alarms as SMS or email

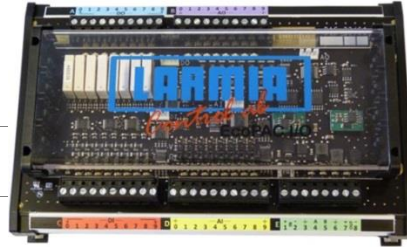
DATE SCHEDULES
For special operational periods

Display	4" wide color. TFT-touch.
Web	Embedded web server.
Dimensions	W 180 mm, H 95 mm, D 40 mm.
Power supply	Through PAC I/O 32.
Battery	Maintenance charged lithium battery, for internal clock only.
Editering	Freely programmable using Larmia ED10 (IEC-61131-3), function blocks and structured text.
Communication	Over network, with Atlantis using the embedded web server, or Modbus Slave with 3 rd party SCADA systems. Drivers for Modbus/TCP (max 75 addresses) and M-bus (max 50 addresses).
Ports	1 Ethernet interface, 1 available USB, 1 USB for PAC I/O communication.
Cabling for PAC I/O 32	1.8 meter cabling for power supply from PAC I/O 32. 1.8 meter cabling for communication with PAC I/O 32.



PAC I/O 32

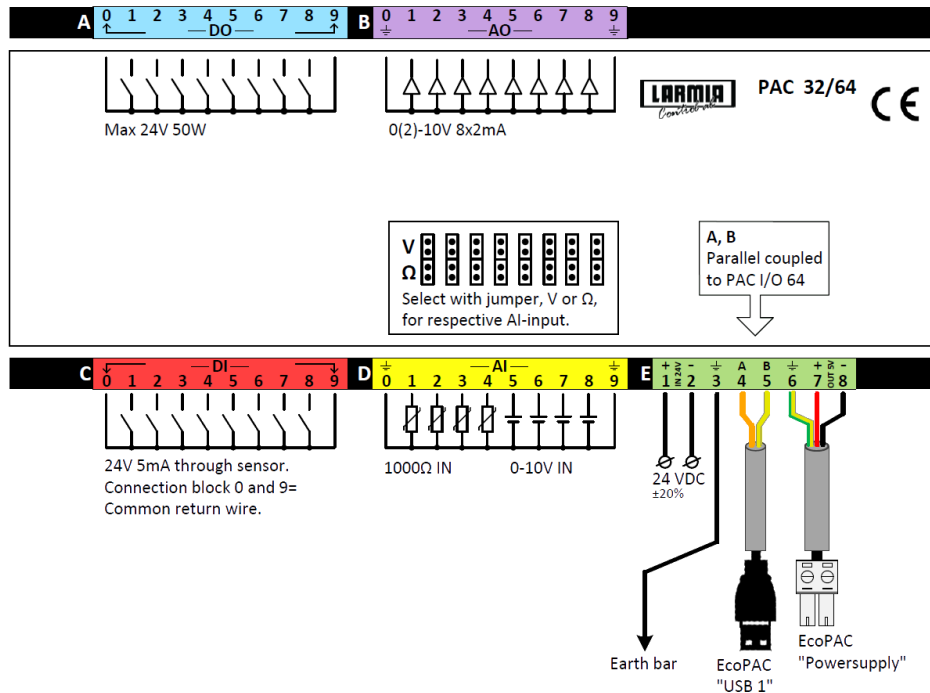
Dimensions	L 204 mm, W 128 mm, H 65 mm. DIN rail mounted.
Power supply	24 V DC $\pm 20\%$ (Optional AC/DC power supply). Embedded power supply for EcoPAC.
Digital IN	8 isolated inputs with LED indication. 5 mA current, connect to 0 for active input. Max frequency 100 Hz, shortest pulse length 1 ms. 2 common returns (signal ground) protected by PTC resistors.
Analog IN	8 16-bit inputs. LED with level indication, for 0-10V or resistive sensors (selectable with jumpers). Inputs can be used as Digital IN. 2 common ground returns (G0)
Digital OUT	8 relay outputs with LED indication, max 2A, 24V AC/DC. 2 common returns. The relays are protected by varistors.
Analog OUT	8 8-bit 0-10V outputs. LED with level indication. Max load 2 mA. 2 common ground returns (G0).
Terminals	Disconnectable terminals for max 2,5 mm ² , AWG12.



PAC I/O 64

An additional I/O unit, with 32 I/O's, can be connected to EcoPAC, giving a total of 64 I/O's for an EcoPAC.

Connection instructions



LARMIA CONTROL AB



- SCADA Systems
- PLC's
- Energy optimization
- Web clients
- Mobile apps
- Industrial alarm systems

Aniaraplatsen 4, 3tr
Box 83
S-191 22 Sollentuna
Tel +46 8-444 53 00

Subject to changes