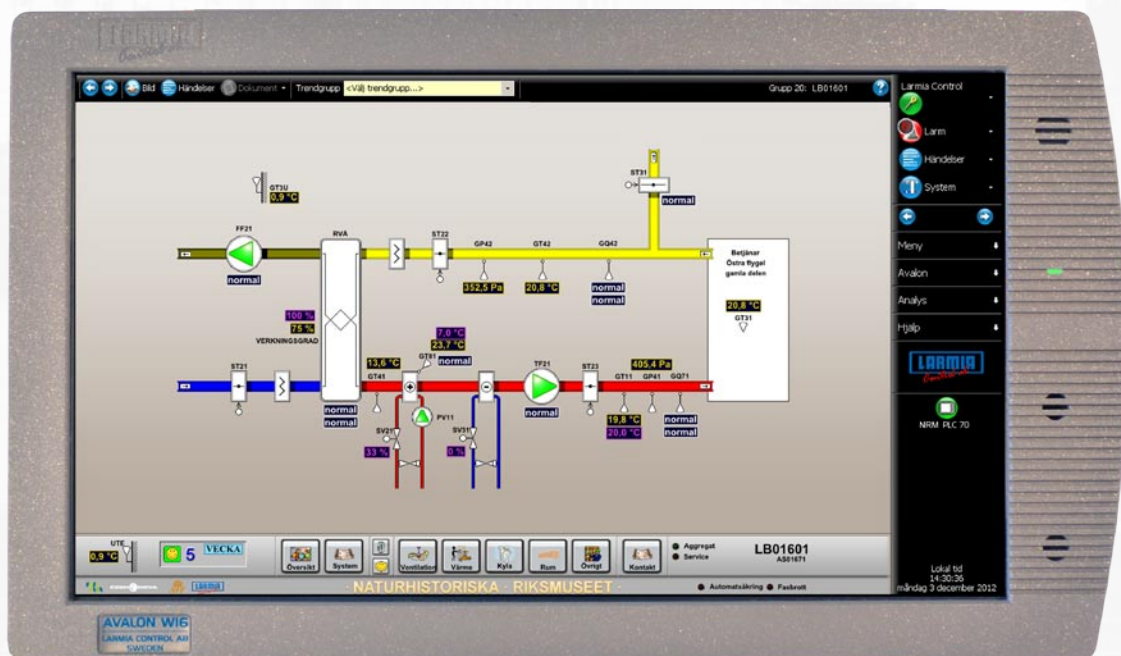


# LARMIA

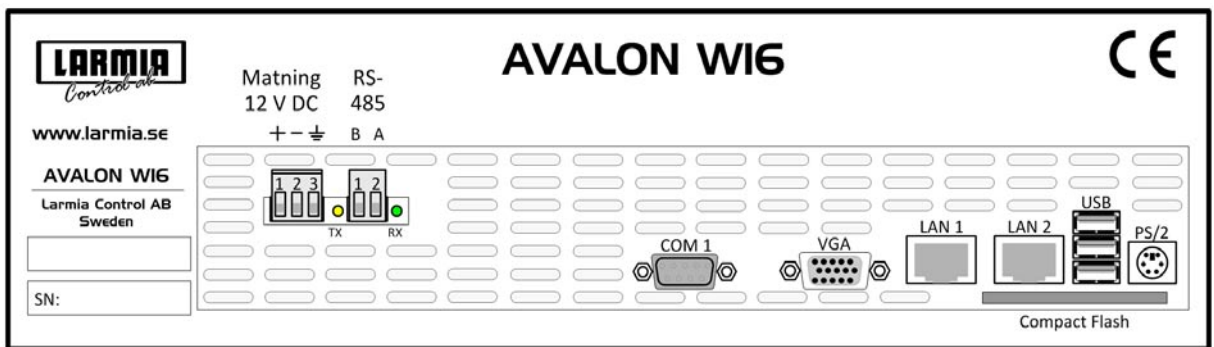
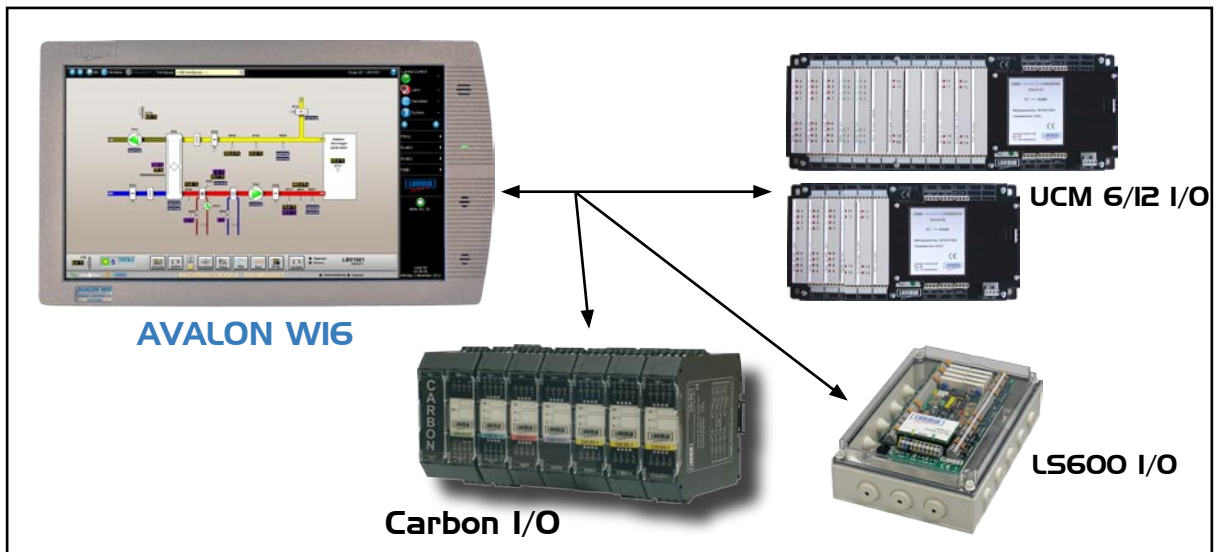
*Control ab*

## AVALON W16

PC based building PLC/PAC with integrated HMI for all automation



- 15,6" LED TFT-LCD screen WXGA
- Larmia Controls Atlas with built in web server
- Built in occupancy sensor and alarm/operation indication
- Opto-isolated RS-485 COM port
- Speaker and microphone
- Casing and chassis entirely made of aluminium/steel
- No moving parts
- Swedish product



<b>Software:</b>	Larmia Atlas control and graphics software, with integrated web server.
<b>CPU:</b>	Intel Atom N270 1,6 GHz
<b>Memory:</b>	SDRAM 1 GB
<b>Storage media:</b>	Compact Flash card. 4 GB standard
<b>Network LAN:</b>	10/100Base-T Ethernet interface x 2
<b>Ports:</b>	1 Serial port RS-485 galvanically opto-isolated, 1 Serial port RS-232. 3 USB ports, 1 PS/2 port for mouse and keyboard, 1 VGA port for external display.
<b>Operating System:</b>	MS Windows XP Embedded
<b>Screen:</b>	Color LED TFT-LCD 15,6" W resistive touch.
Max colors:	16,7 millions
Resolution:	1366 x 768 WXGA
<b>Cooling:</b>	"Low power" fan-less
<b>Power supply:</b>	12 V DC. Use the enclosed power supply unit. 85-263V AC / 90-375V DC / 19-30W
<b>Other:</b>	Built in occupancy sensor and alarm/indication LED. Speaker and microphone.
<b>Weight:</b>	4,5 kg
<b>Dimensions [ W x H x D ] :</b>	412 x 240 x 82+4 (mm)
<b>Cut-out dim. [ W x H ] :</b>	391x 231 (mm)

**Environment:** Surrounding temperature 0-45°C. Relative humidity 10-95% non condensing. Shock 8 G (10ms cycles). IP54, option IP65.

**CE marked acc. to:** EMC: EN61000-6-2 och EN61000-6-3 LVD:EN 60950-1 RoHs